



HIGH PERFORMANCE PROTECTUS® III FIRE SERVICE METER

SIZES: 4", 6", 8" AND 10"



The High Performance PROTECTUS® III Fire Service Meter is designed to measure both domestic and fire service water usage through a single water line.



The HP PROTECTUS III Fire Service Meter measures extremely wide flow ranges at 100% ± 1.5% accuracy. All HP Fire Service Meters meet or exceed AWWA C703 Standard and are Underwriters Laboratory (UL) Listed and Factory Manual (FM) Approved for fire service use.

The HP PROTECTUS III Fire Service Meter is designed to measure both domestic and fire service water usage through a single water line. A typical application would be in a warehouse, hotel, or hospital where one water line may supply any number of faucets or bathrooms as well as an automatic sprinkler system.

At low flow rates, all flow is through the bypass meter. As flow increases, pressure loss through the bypass meter increases and the detector check valve automatically opens. This condition occurs, for example, when a fire sprinkler system goes into operation. This permits flow through the mainline turbine meter. As flow decreases, reduced pressure loss closes the detector check valve and flow is again directed through the bypass meter.

The combined readings of the mainline turbine and the bypass meter indicate total consumption through the HP PROTECTUS III meter.

- Epoxy-coated steel mainline body
- Integral detector check valve (stainless steel spring-loaded type)
- Epoxy-coated steel strainer body with stainless steel basket
- HP Turbine measuring element
- All bronze bypass assembly
- Ball valves used on bypass
- Check valve used on bypass
- 1" T-10 meter (on 4" size)
- 1 1/2" T-10 or 1 1/2" HP Turbine meter (on 6" size)
- 2" T-10 or 2" HP Turbine meter (on 8" and 10" sizes)

KEY FEATURES

- Compact Size
 - Standard laying length fits existing installations
 - Lightweight
 - Lowers new installation and replacement costs
- Wide Operating Range
 - Measures extremely wide flow ranges at 98.5%–101.5% accuracy
 - Combines low-flow sensitivity of disc meter with high-flow capacity of turbine meter
 - Registers leaks or unauthorized use of water from fire service lines
- Component Repair and Maintenance
 - Owner maintenance easily accomplished by replacement of major components
 - Calibration vane allows in-field calibration of Unitized Measuring Element (UME)
- Roll-Sealed Registers
 - Eliminates leaking and fogging
 - In-line serviceability
 - Magnetic driven, low torque registration
 - Tamperproof seal design

WARRANTY

Neptune provides a limited warranty with respect to its HP PROTECTUS III Fire Service Meter for performance, materials, and workmanship.

When desired, owner maintenance is easily accomplished by in-line replacement of the UME.

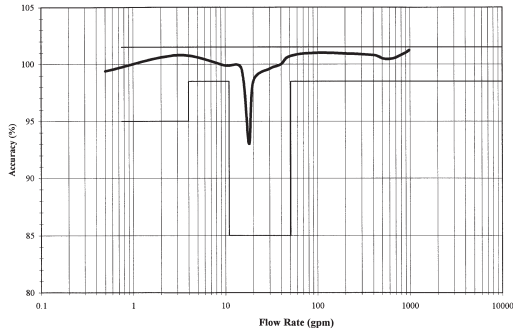
APPLICATION

OPERATION

CONSTRUCTION

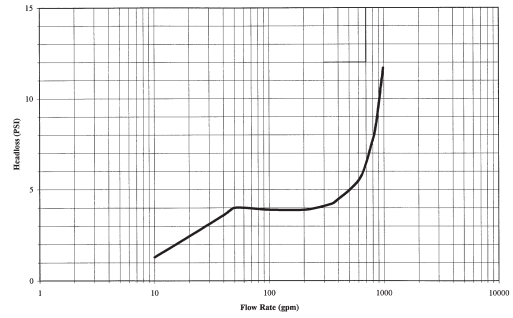
4" ACCURACY

4" HP PROTECTUS III
Accuracy vs. Flow Rate



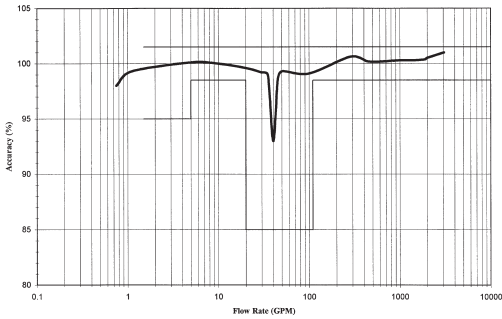
4" HEADLOSS

4" HP PROTECTUS III
HEADLOSS



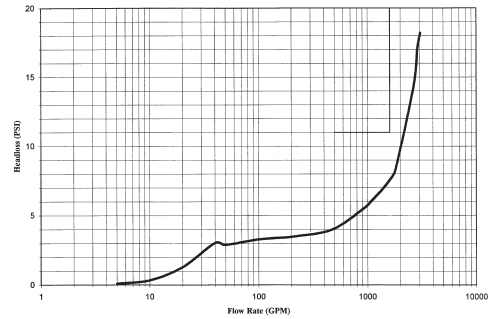
6" ACCURACY

6" HP PROTECTUS III
ACCURACY



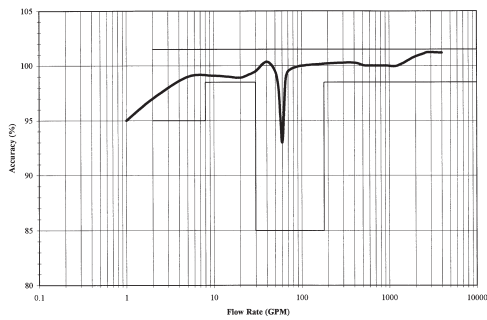
6" HEADLOSS

6" HP PROTECTUS III
HEADLOSS



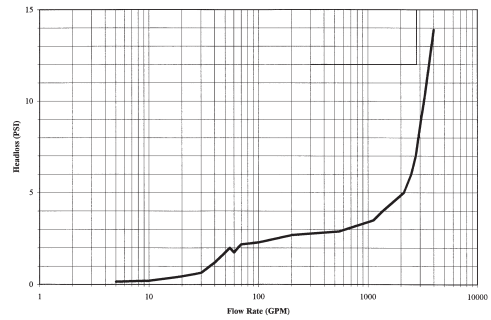
8" ACCURACY

8" HP PROTECTUS III
ACCURACY



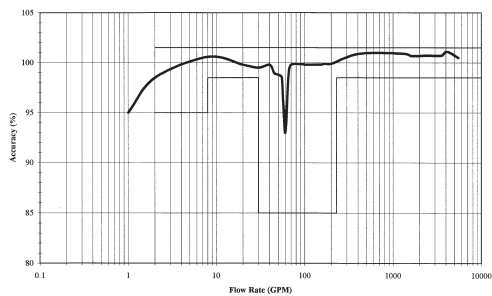
8" HEADLOSS

8" HP PROTECTUS III
HEADLOSS



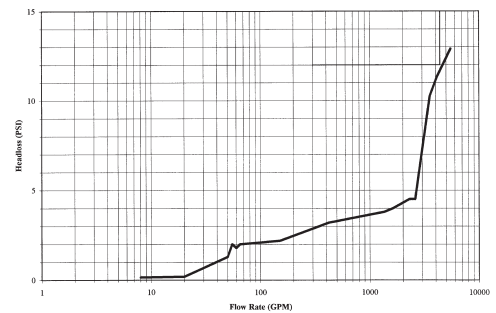
10" ACCURACY

10" HP PROTECTUS III
ACCURACY



10" HEADLOSS

10" HP PROTECTUS III
HEADLOSS



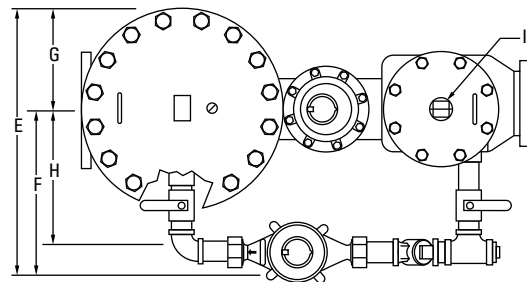
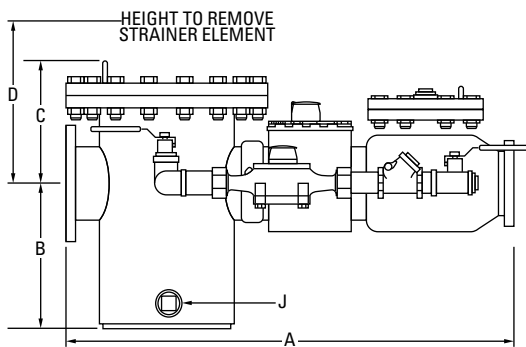
These charts show typical meter performance. Individual results may vary.

OPERATING CHARACTERISTICS

Meter Size	Normal Operating Range* @100% Accuracy (±1.5%)	AWWA Standard	Low Flow @95% Accuracy	Maximum Intermittent Flow Rate
4"	3/4 to 1200 US gpm 0.171 to 272.55 m ³ /h	2 to 700 US gpm 0.45 to 159 m ³ /h	3/8 US gpm 0.09 m ³ /h	1500 US gpm 340.7 m ³ /h
6"	1 1/2 to 2500 US gpm 0.34 to 567.81 m ³ /h	4 to 1600 US gpm 0.91 to 363 m ³ /h	3/4 US gpm 0.17 m ³ /h	3100 US gpm 704.1 m ³ /h
8"	2 to 4000 US gpm 0.45 to 908.5 m ³ /h	7 to 2800 US gpm 1.6 to 636 m ³ /h	1 US gpm 0.23 m ³ /h	5000 US gpm 1135.6 m ³ /h
10"	2 to 6500 US gpm 0.45 to 1476.31 m ³ /h	12 to 4400 US gpm 2.7 to 999 m ³ /h	1 US gpm 0.23 m ³ /h	8000 US gpm 1817 m ³ /h

DIMENSIONS

Meter Size	A	B	C	D	E	F	G	H	I	J	Weight lbs/kg
4"	33	10	10 3/4	17 1/2	22	15 1/4	6 3/4	12	2	2	215
	838	254	273	445	559	387	171	305	51	51	98
6"	45	11 1/16	11 3/8	21 1/4	29	19 1/2	9 1/2	16	2	3	570
	1143	281	289	540	737	495	241	406	51	76	258
8"	53	11 13/16	13 29/64	25 7/8	34 1/4	21 3/4	12 1/2	17	3	3	765
	1346	300	342	657	870	552	318	432	76	76	347
10"	68	14 13/16	15	30 1/16	36 1/4	22 1/2	13 3/4	18	3	3	900
	1727	376	381	764	921	572	349	457	76	76	408



GUARANTEED SYSTEMS COMPATIBILITY

All HP PROTECTUS III Fire Service meters are guaranteed adaptable to our ARB®V, ProRead™ (ARB VI), E-Coder, E-Coder)R900*i*, TRICON®/S, TRICON®/E3, and Neptune meter reading systems without removing the meter from service.

REGISTRATION

Registration (per sweep hand revolution)	Disc Side			Turbine Side		
	1"	1 1/2"	2"	4"	6"	8" & 10"
1,000 US Gallons					3	3
100 Gallons		3	3	3		
100 Cubic Feet					3	3
10 US Gallons	3					
10 Cubic Feet		3	3	3		
1 Cubic Foot	3					
10 Cubic Metres					3	3
1 Cubic Metre			3	3		
0.1 Cubic Metre	3	3				
Register Capacity (6 active wheel odometer)	Disc Side			Turbine Side		
	1"	1 1/2"	2"	4"	6"	8" & 10"
1,000,000,000 Gallons					3	3
100,000,000 Gallons		3	3	3		
100,000,000 Cubic Feet					3	3
10,000,000 Gallons	3					
10,000,000 Cubic Feet		3	3	3		
10,000,000 Cubic Metres					3	3
1,000,000 Cubic Metres			3	3		
1,000,000 Cubic Feet	3					
100,000 Cubic Metres	3	3				

SPECIFICATIONS

- Application: cold water measurement of flow in one direction
- Maximum operating pressure: 175 psi (1206 kPa)
- Register: direct reading, center sweep, roll-sealed magnetic drive with low-flow indicator
- Measuring element: AWWA Class II Turbine, hydrodynamically balanced rotor, nutating disc
- Flanges: round flanged ends per AWWA C207, Class D

OPTIONS

- Sizes: 4", 6", 8", and 10"
- Units of measure: U.S. gallons, imperial gallons, cubic feet, cubic metres
- Register types:
 - Direct reading: Bronze box and cover (standard)
 - Remote reading systems*: ARB V, ProRead, E-Coder™, E-Coder)R900*i*, TRICON/S, TRICON/E3
 - Reclaim
- Companion flanges:
 - Cast iron
 - Bronze (4" only)

* Consult factory for meter performance specifications when fitted with ARB.

Neptune engages in ongoing research and development to improve and enhance its products. Therefore, Neptune reserves the right to change product or system specifications without notice.

Neptune Technology Group Inc.

1600 Alabama Highway 229
Tallahassee, AL 36078
USA
Tel: (800) 645-1892
Fax: (334) 283-7299

Neptune Technology Group (Canada) Ltd.

7275 West Credit Avenue
Mississauga, Ontario
L5N 5M9
Canada
Tel: (905) 858-4211
Fax: (905) 858-0428

Neptune Technology Group Inc.

Ejército Nacional No. 418
Piso 12, Desp. 1201-1202
Col. Chapultepec Morales
Delegación Miguel Hidalgo
11570 México, Distrito Federal
Tel: (525) 55203 5294 / (525) 55203 5708
Fax: (525) 55203 6503



NEPTUNE
TECHNOLOGY GROUP

neptunetg.com